

Magni

# Magni RTH5.25 SMART S-D/C

€ 74.500 özel

Y?l 2016  
Referans numaras? BM006419  
Hours 11.371

## Algemeen

T?r RTH5.25 SMART S-D/C  
Yer Veldhoven, Netherlands  
Dutch vehicle  
Certificaat CE + EPA  
Chassis nummer 00000810

Aç?klama

Available at Boss Machinery! This Magni RTH5.25 SMART S-D/C Telescopic handlers from 2016 has an engine power of 100 kW and counts 11371 operational hours. Always worked in The Netherlands. The total weight of this Magni RTH5.25 SMART S-D/C is 17950 kg and the dimensions are 8.68 x 2.50 x 3.15. Furthermore, this RTH5.25 SMART S-D/C is equipped with AdBlue, H?z1? kupl?r, Ekstra hidrolik i?levi. The Magni Telescopic handlers also has a CE + EPA marking. Do you want more information or do you want to try the Magni RTH5.25 SMART S-D/C at our yard? Please let us know.

## Maten / Gewichten

Maksimum y?k kapasitesi 5000 kg  
Boyutlar U\*G\*Y 8.68 x 2.50 x 3.15  
A??rl?k 17950

## Technische informatie

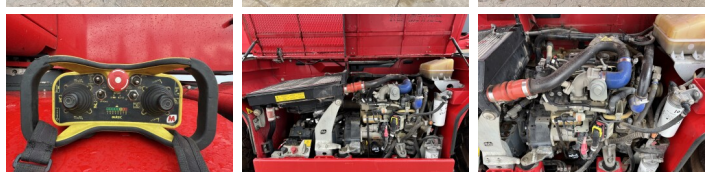
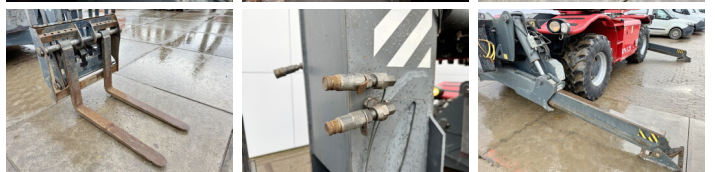
S?r?c? yap?land?rmalar? 4x4

## Motor informatie

Motor markas? Deutz  
Engine model TCD 3.6 L4  
Silindirler 4  
KW cinsinden kapasite 100

# BOSS

## MACHINERY



## **Banden / Rupsen**

---

30% 30% 445/65R22.5  
30% 30% 445/65R22.5

## **Opties**

---

AdBlue  
H?zl? kupl?r  
Ekstra hidroliek i?levi