

Caterpillar

Caterpillar 6x6 BLADE + RIPPER

€ 87.500wy??czny podatek

Rok **2009**
Numer referencyjny **BM005869**
Godziny **16.069**

Algemeen

Typ 160M 6x6 BLADE + RIPPER
Lokalizacja Veldhoven, Netherlands
Certificaat EPA

Opis

Available at Boss Machinery! This Caterpillar 160M 6x6 BLADE + RIPPER Grader from 2009 has an engine power of 200 kW and counts 16069 operational hours. The total weight of this Caterpillar 160M 6x6 BLADE + RIPPER is 19715 kg and the dimensions are 11.10 x 3.44 x 3.50. Furthermore, this 160M 6x6 BLADE + RIPPER is equipped with Airco, Joystick steering, Heated Mirrors, Radio, Dodatkowa funkcja hydrauliczna. The Caterpillar Grader also has a EPA marking. Do you want more information or do you want to try the Caterpillar 160M 6x6 BLADE + RIPPER at our yard? Please let us know.

Maten / Gewichten

Waga 19715
Wymiary D*S*W 11.10 x 3.44 x 3.50

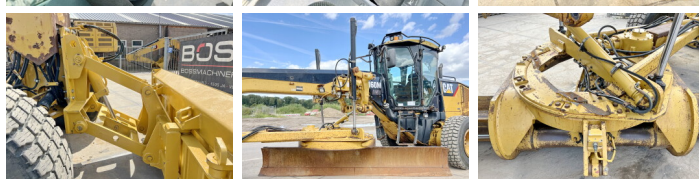
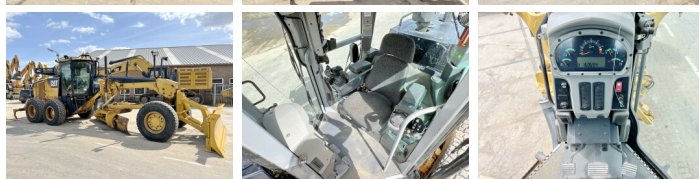
Technische informatie

Konfiguracje dysków 6x6

Motor informatie

Marka silnika Caterpillar
Model silnika C9
Cylindry 6
Turbo
Wydajno?? w kW 200

BOSS
MACHINERY



Banden / Rupsen

70%	70%	17.5R25
70%	70%	17.5R25
70%	70%	17.5R25

Opties

Airco

Joystick steering

Heated Mirrors

Radio

Dodatkowa funkcja
hydrauliczna