

Caterpillar

Caterpillar 12M2 6x6

BOSS
MACHINERY

Rok **2013**
Numer referencyjny **BM005765**
Godziny **14.808**

Algemeen

Typ 12M2 6x6
Lokalizacja Veldhoven, Netherlands
Certificaat EPA
Chassis nummer CAT0012MEF9B00171

Available at Boss Machinery! This Caterpillar 12M2 6x6 Grader from 2013 has an engine power of 181 kW and counts 14808 operational hours. The total weight of this Caterpillar 12M2 6x6 is 20116 kg and the dimensions are 9.45 x 3.30 x 3.43. Furthermore, this 12M2 6x6 is equipped with Joystick steering, Heated Cab, Front Lift, Bluetooth, Airco, Heated Mirrors, Radio, Non CE, Dodatkowa funkcja hydrauliczna. The Caterpillar Grader also has a EPA marking. Do you want more information or do you want to try the Caterpillar 12M2 6x6 at our yard? Please let us know.

Opis

Maten / Gewichten

Waga 20116
Wymiary D*S*W 9.45 x 3.30 x 3.43
Extra dimensions: 4.95m Blade

Technische informatie

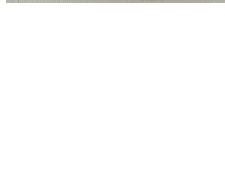
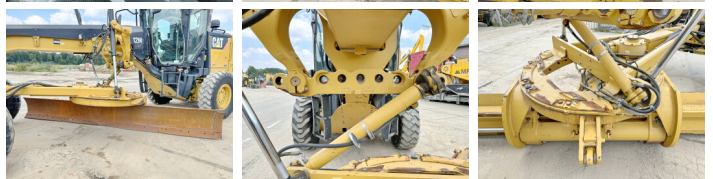
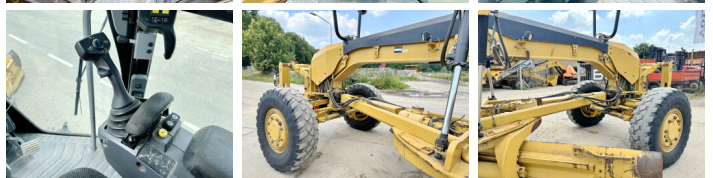
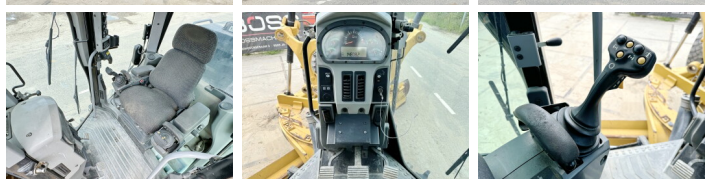
Reverse Drive
Konfiguracje dysków 6x6

Motor informatie

Marka silnika Caterpillar
Model silnika C9.3
Cylindry 6
Turbo
Wydajno?? w kW 181

Banden / Rupsen

30% 30% 14.00R24



30% 30%
30% 30%

14.00R24
14.00R24

Opties

Joystick steering

Heated Cab

Front Lift

Bluetooth

Airco

Heated Mirrors

Radio

Non CE

Dodatkowa funkcja
hydrauliczna