

Case

Case CX250C

€ 31.500excl.

Annee de construction **2013**
Numero de reference **BM006430**
Heures **14.593**

Algemeen

Type CX250C
Emplacement Veldhoven, Netherlands
Dutch vehicle

Overig Hammer Lines - Quick Coupler - Dutch Machine - Automatic Greasing - Rear + Side Camera - CE + EPA - AC

Certificaat CE + EPA
Available at Boss Machinery! This Case CX250C Excavator from 2013 has an engine power of 132 kW and counts 14593 operational hours. Always worked in The Netherlands. The total weight of this Case CX250C is 26600 kg and the dimensions are 9.92 x 3.50 x 3.39. Furthermore, this CX250C is equipped with Attache rapide pour godet, Camera, Radio, climatiseur, Fonction hydraulique supplémentaire, Fonction de marteau, Graissage centralisé. The Case Excavator also has a CE + EPA marking. Do you want more information or do you want to try the Case CX250C at our yard? Please let us know.

Maten / Gewichten

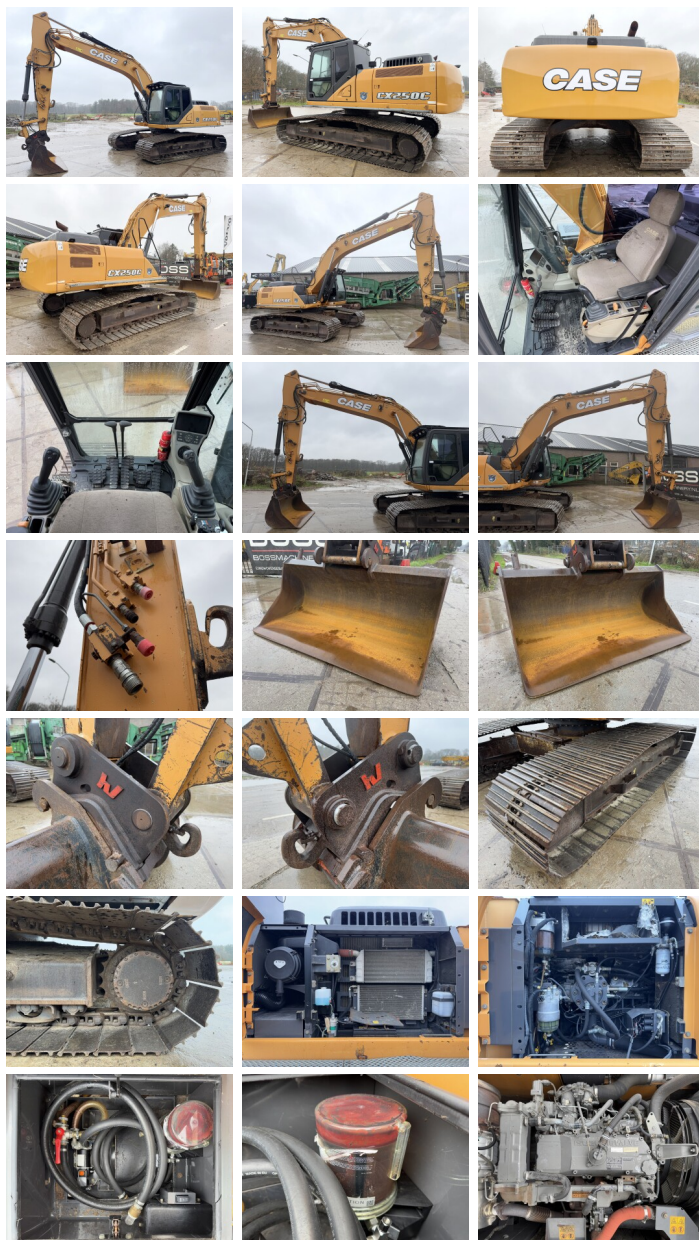
Dimensions L*L*H 9.92 x 3.50 x 3.39
Poids 26600

Motor informatie

Moteur marque Isuzu
Moteur type AL-4HK1X
Cylindres 4
Turbo
Puissance dans kW 132

BOSS

MACHINERY



Banden / Rupsen

| | |
|----------------------|-------|
| Sprocket % | 40 |
| Chain % | 60 |
| Plate % | 60 |
| Largeur de la plaque | 90 cm |

Opties

Attache rapide pour godet

Camera

Radio

climatiseur

Fonction hydraulique
supplémentaire

Fonction de marteau

Graissage centralisé