

Manitou

Manitou MRT2150+ AWD

BOSS
MACHINERY

€ 64.500excl.

Annee de construction **2015**
Numero de reference **BM006440**
Heures **8.579**

Algemeen

Type MRT2150+ - Remote control
Emplacement Veldhoven, Netherlands
Certificaat CE
Chassis nummer 768020

Description

Available at Boss Machinery! This Manitou MRT2150+ - Remote control Telescopic handlers from 2015 has an engine power of 110 kW and counts 8579 operational hours. The total weight of this Manitou MRT2150+ - Remote control is 16410 kg and the dimensions are 7.00 x 2.42 x 3.04. Furthermore, this MRT2150+ - Remote control is equipped with Beacon, Air Suspension Seat, Fonction hydraulique supplémentaire. The Manitou Telescopic handlers also has a CE marking. Do you want more information or do you want to try the Manitou MRT2150+ - Remote control at our yard? Please let us know.

Maten / Gewichten

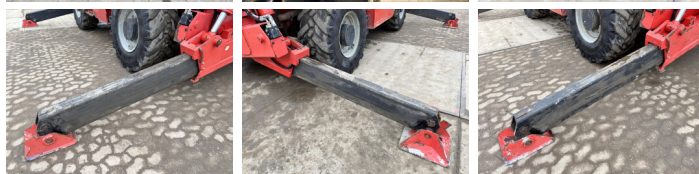
Dimensions L*L*H 7.00 x 2.42 x 3.04
Capacité de charge maximale 5000
Poids 16410
Portée 21

Technische informatie

Configurations de lecteur 4x4

Motor informatie

Moteur marque Mercedes-Benz
Moteur type OM 934
Cylindres 4
Turbo
Puissance dans kW 110



Banden / Rupsen

40% 40% 445/70R22.5
40% 40% 445/70R22.5

Opties

Beacon
Air Suspension Seat
Fonction hydraulique
supplémentaire