

Magni

# Magni RTH5.25 SMART S-D/C

€ 74.500excl.

Annee de construction **2016**  
Numero de reference **BM006419**  
Heures **11.371**

## Algemeen

Type RTH5.25 SMART S-D/C  
Emplacement Veldhoven, Netherlands  
Dutch vehicle  
Certificaat CE + EPA  
Chassis nummer 00000810

Description

Available at Boss Machinery! This Magni RTH5.25 SMART S-D/C Telescopic handlers from 2016 has an engine power of 100 kW and counts 11371 operational hours. Always worked in The Netherlands. The total weight of this Magni RTH5.25 SMART S-D/C is 17950 kg and the dimensions are 8.68 x 2.50 x 3.15. Furthermore, this RTH5.25 SMART S-D/C is equipped with AdBlue, Attache rapide pour godet, Fonction hydraulique supplémentaire. The Magni Telescopic handlers also has a CE + EPA marking. Do you want more information or do you want to try the Magni RTH5.25 SMART S-D/C at our yard? Please let us know.

## Maten / Gewichten

Capacité de charge maximale 5000 kg  
Dimensions L\*L\*H 8.68 x 2.50 x 3.15  
Poids 17950

## Technische informatie

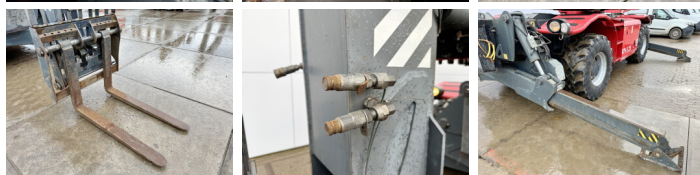
Configurations de lecteur 4x4

## Motor informatie

Moteur marque Deutz  
Moteur type TCD 3.6 L4

# BOSS

MACHINERY



Cylindres	4
Puissance dans kW	100

## **Banden / Rupsen**

---

30%	30%	445/65R22.5
30%	30%	445/65R22.5

## **Opties**

---

AdBlue  
Attache rapide pour godet  
Fonction hydraulique  
supplémentaire