

Magni

Magni RTH5.26

BOSS
MACHINERY

€ 69.500excl.

Annee de construction **2013**
Numero de reference **BM005722**
Heures **4.213**

Algemeen

Type RTH5.26
Emplacement Veldhoven, Netherlands
Dutch vehicle
Certificaat CE

Description

Available at Boss Machinery! This Magni RTH5.26 Telescopic handlers from 2013 has an engine power of 115 kW and counts 4213 operational hours. Always worked in The Netherlands. The total weight of this Magni RTH5.26 is 18000 kg and the dimensions are 9.35 x 2.85 x 3.16. Furthermore, this RTH5.26 is equipped with Attache rapide pour godet, Beacon, Radio, Backup alarm. The Magni Telescopic handlers also has a CE marking. Do you want more information or do you want to try the Magni RTH5.26 at our yard? Please let us know.

Maten / Gewichten

Dimensions L*L*H 9.35 x 2.85 x 3.16
Poids 18000

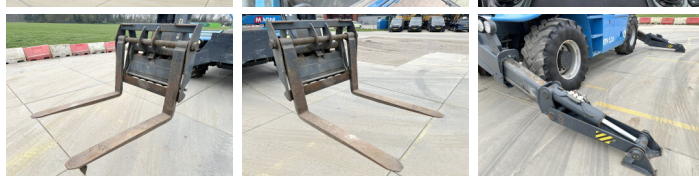
Technische informatie

Lifting Height 25.66 m
Boîte de vitesses Automatic
Configurations de lecteur 4 x 4

Motor informatie

Moteur marque Mercedes
Moteur type OM924LA
Cylindres 4
Puissance dans kW 115

Banden / Rupsen



40%	90%	18-22.5
40%	40%	18-22.5

Opties

Attache rapide pour godet
Beacon
Radio
Backup alarm