

Caterpillar

# Caterpillar 12M2 6x6

**BOSS**  
MACHINERY

Annee de construction **2013**  
Numero de reference **BM005765**  
Heures **14.808**

## Algemeen

Type 12M2 6x6  
Emplacement Veldhoven, Netherlands  
Certificaat EPA  
Chassis nummer CAT0012MEF9B00171

Available at Boss Machinery! This Caterpillar 12M2 6x6 Grader from 2013 has an engine power of 181 kW and counts 14808 operational hours. The total weight of this Caterpillar 12M2 6x6 is 20116 kg and the dimensions are 9.45 x 3.30 x 3.43. Furthermore, this 12M2 6x6 is equipped with Joystick steering, Heated Cab, Front Lift, Bluetooth, climatiseur, Heated Mirrors, Radio, Non CE, Fonction hydraulique supplémentaire. The Caterpillar Grader also has a EPA marking. Do you want more information or do you want to try the Caterpillar 12M2 6x6 at our yard? Please let us know.

Description

## Maten / Gewichten

Poids 20116  
Dimensions L\*L\*H 9.45 x 3.30 x 3.43  
Extra dimensions: 4.95m Blade

## Technische informatie

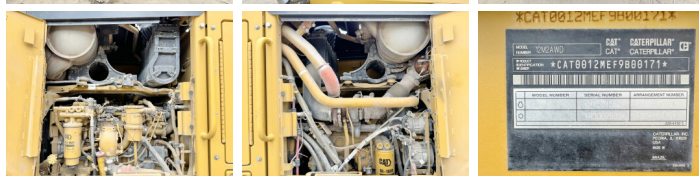
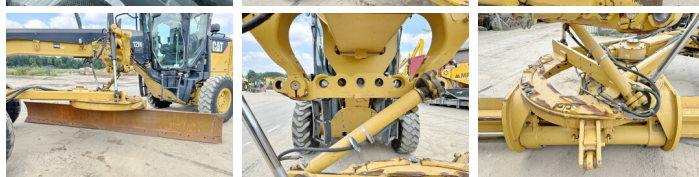
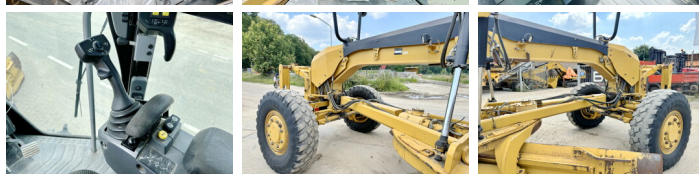
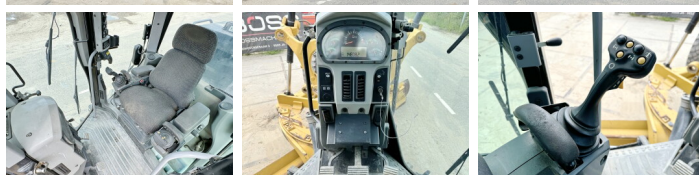
Reverse Drive  
Configurations de lecteur 6x6

## Motor informatie

Moteur marque Caterpillar  
Moteur type C9.3  
Cylindres 6  
Turbo  
Puissance dans kW 181

## Banden / Rupsen

30% 30% 14.00R24



30% 30%  
30% 30%

14.00R24  
14.00R24

## Opties

---

Joystick steering

Heated Cab

Front Lift

Bluetooth

climatiseur

Heated Mirrors

Radio

Non CE

Fonction hydraulique  
supplémentaire