

Case

Case CX250C

€ 31.500excl.

Year **2013**
Reference number **BM006430**
Hours **14.593**

Algemeen

Type **CX250C**
Location **Veldhoven, Netherlands**
Dutch vehicle

Overig **Hammer Lines - Quick Coupler - Dutch Machine - Automatic Greasing - Rear + Side Camera - CE + EPA - AC**

Certificaat **CE + EPA**
Available at Boss Machinery! This Case CX250C Excavator from 2013 has an engine power of 132 kW and counts 14593 operational hours. Always worked in The Netherlands. The total weight of this Case CX250C is 26600 kg and the dimensions are 9.92 x 3.50 x 3.39. Furthermore, this CX250C is equipped with Air Conditioning, Quick coupler, Camera, Radio, Extra hydraulic function, Hammer function, Central greasing. The Case Excavator also has a CE + EPA marking. Do you want more information or do you want to try the Case CX250C at our yard? Please let us know.

Description

Maten / Gewichten

L*W*H: **9.92 x 3.50 x 3.39**
Weight: **26600**

Motor informatie

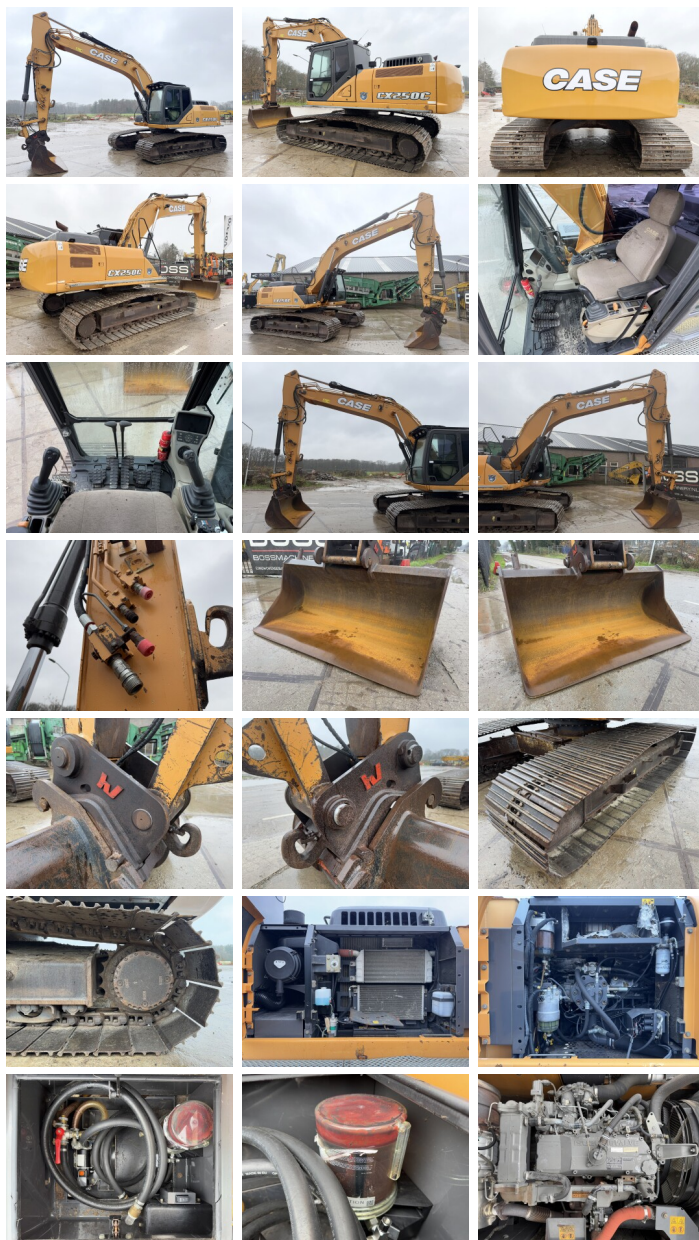
Engine brand: **Isuzu**
Engine model: **AL-4HK1X**
Cylinders: **4**
Turbo
Capacity in kW: **132**

Banden / Rupsen

Plate % **60**

BOSS

MACHINERY



Sprocket %	40
Chain %	60
Plate width:	90 cm

Opties

Air Conditioning

Quick coupler

Camera

Radio

Extra hydraulic function

Hammer function

Central greasing