

Caterpillar

Caterpillar 6x6 BLADE + RIPPER

€ 87.500???

2009
BM005869
16.069

Algemeen

160M 6x6 BLADE + RIPPER
Veldhoven, Netherlands
EPA

Available at Boss Machinery! This Caterpillar 160M 6x6 BLADE + RIPPER Grader from 2009 has an engine power of 200 kW and counts 16069 operational hours. The total weight of this Caterpillar 160M 6x6 BLADE + RIPPER is 19715 kg and the dimensions are 11.10 x 3.44 x 3.50. Furthermore, this 160M 6x6 BLADE + RIPPER is equipped with Radio, Joystick steering, Heated Mirrors, The Caterpillar Grader also has a EPA marking. Do you want more information or do you want to try the Caterpillar 160M 6x6 BLADE + RIPPER at our yard? Please let us know.

Maten / Gewichten

19715
11.10 x 3.44 x 3.50

Technische informatie

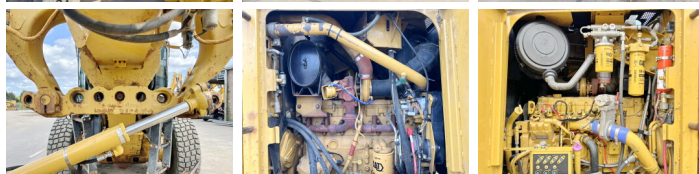
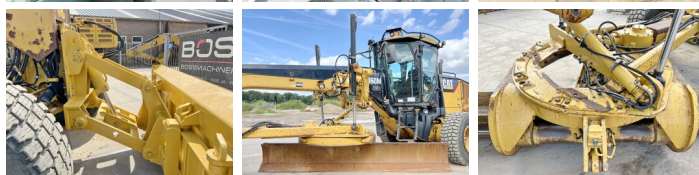
6x6

Motor informatie

Caterpillar
C9
6
200

BOSS

MACHINERY



Banden / Rupsen

70%	70%	17.5R25
70%	70%	17.5R25
70%	70%	17.5R25

Opties

Radio

?????\?????

Joystick steering

Heated Mirrors

???? ???? ????? ???? ?